

Fugue in G minor

JS Bach arr. Robin Ireland
Arranged by [Arranger]

viola 2

Musical score for "The Rose Tree" in 12/8 time. The score is written for a piano (p) and a violin (V). The key signature is one flat (B-flat). The tempo is marked "Allegretto". The score consists of 36 measures, divided into 12 measures per system. The piano part is in the bass clef, and the violin part is in the treble clef. The score includes various musical notations such as notes, rests, accidentals, and dynamic markings (p, f, cresc.). The piano part features a melodic line with many eighth and sixteenth notes, while the violin part provides harmonic support with sustained notes and occasional melodic fragments.

V.S.

2

Viola

39



41



45



48



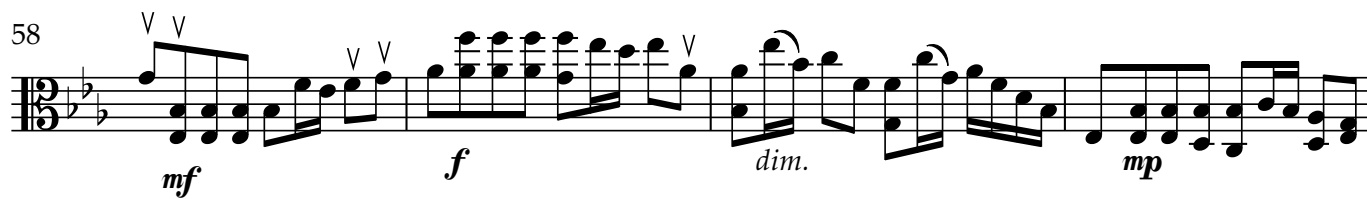
51



54



58



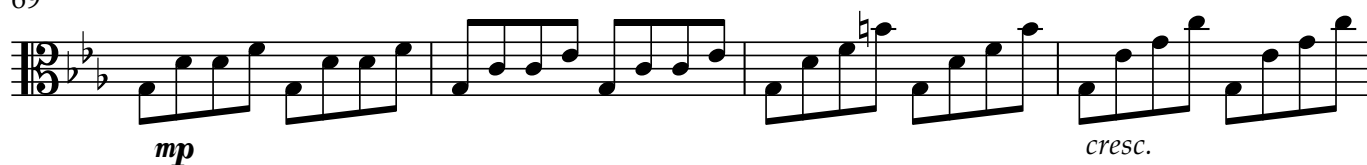
62



66



69



73

73

73

f

mf

77

77

77

78

79

80

80

80

mf

f

84

84

This block contains measures 84 through 87 of the musical score. Measure 84 features a vocal melody starting on a half note G4, followed by a quarter note A4, and then a quarter note B4. The piano accompaniment consists of a bass line with a half note G3 and a quarter note A3, and a treble line with a half note G4 and a quarter note A4. Measure 85 continues the vocal melody with a quarter note C5, followed by a quarter note B4, and then a quarter note A4. The piano accompaniment features a bass line with a half note G3 and a quarter note A3, and a treble line with a half note G4 and a quarter note A4. Measure 86 shows the vocal melody with a quarter note G4, followed by a quarter note F4, and then a quarter note E4. The piano accompaniment has a bass line with a half note G3 and a quarter note A3, and a treble line with a half note G4 and a quarter note A4. Measure 87 concludes the phrase with a quarter note D4, followed by a quarter note C4, and then a quarter note B3. The piano accompaniment features a bass line with a half note G3 and a quarter note A3, and a treble line with a half note G4 and a quarter note A4.

88

88



88

91

91

91

92

93

94

93

93

vla.1

6 6 6

v *V*